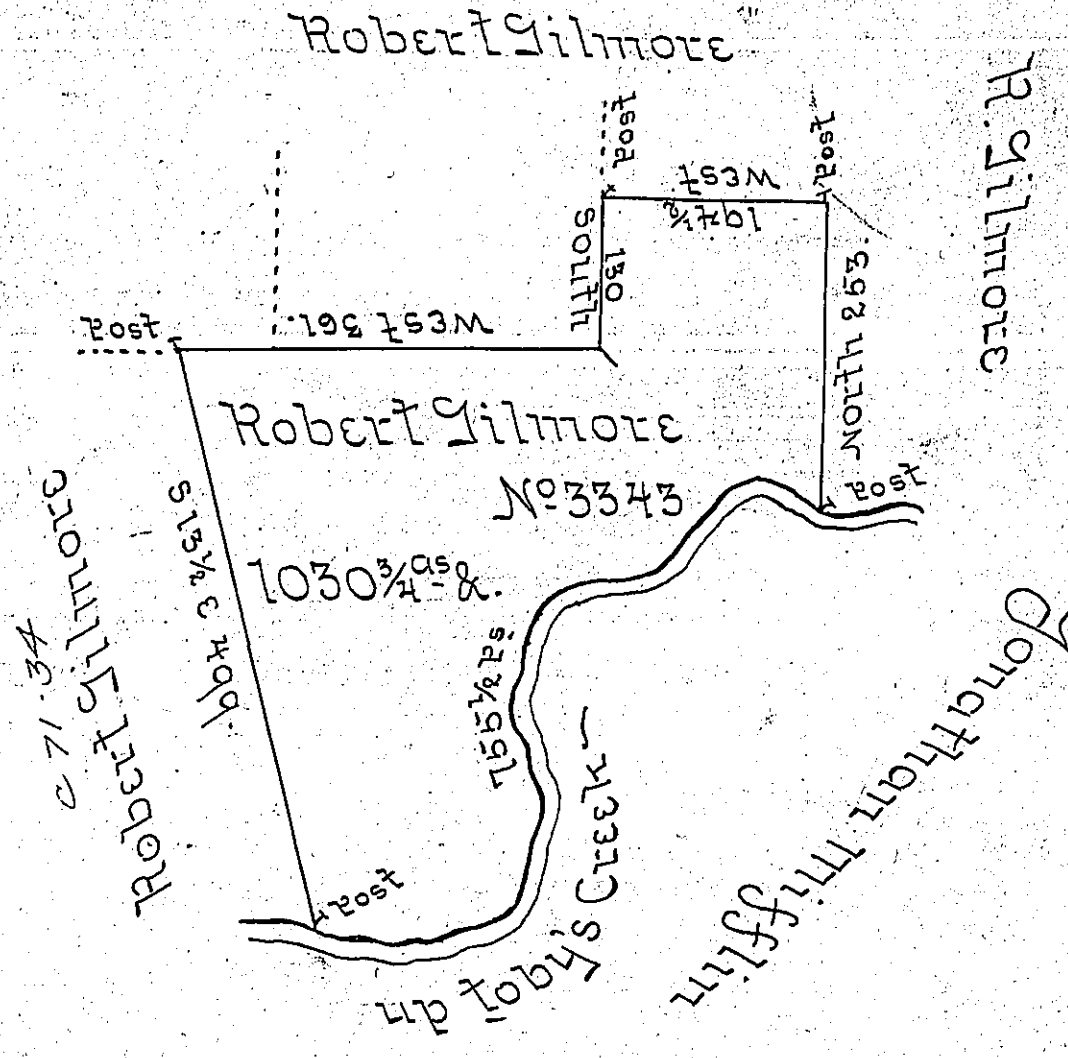


Courses & distances
from the post corner
up Tobys Creek

- S 84 E. 57.
 - N 86 E. 66.
 - N 65 E. 62.
 - N 11 E. 75.
 - N 6 W. 155.
 - N 34 E. 74.
 - N 74 E. 105.
 - N 36 E. 82.
 - N 46 E. 20.
 - S 85 E. 29.
 - S 51 E. 57 1/2.
- 755.5



Surveyed on the 12th of August 1794 for Robert Gilmore
 in pursuance of his Warrant No 3343 dated 14th Decem^r
 1792 the above described tract of land situate on
 Tobys Creek adjoining land of Robert Gilmore in
 District No 6 containing one thousand & thirty acres
 & three quarters & the allowance of six percent

R. J. Brodhead D.S.

To Daniel Brodhead Esq^r
 Survey Gen^l

IN TESTIMONY that the above is a copy of the original remaining on file in
 the Department of Internal Affairs of Pennsylvania, made
 conformably to an Act of Assembly approved the 16th day of
 February, 1833, I have hereunto set my Hand and caused
 the Seal of said Department to be affixed at Harrisburg,
 this thirteenth day of January 1905

Francis P. [Signature]
 Secretary of Internal Affairs.